



LIGHTING CONTROLS

SmarTLC

Software for SLC & ON/OFF Control

SmarTrol v.3.1

Software for ELC, DALI & Wireless System

SOFTWARE

Background of Development

Our Software has been developed with evolution of advanced IT technology. By the release of Window OS from the DOS version in early MS, our software is also been developed at Window OS to control the Lighting Control Program conveniently at early of 2000 year. Therefore, after 14 years, our Software has been Upgrade to many steps.

At early, the Lighting Control System is applied at only for ON/OFF control and the Software that meets the eye was SmarTLC. We have been exported this S/W in the name of Light-X to GE America.

SmarTrol v.1.0 is applied and developed for our iSLC System and Dimming Control System. Recently, The SmarTrol v.3.1 is the software that is developed and applied for ELC System, DALI & Wireless System since 2013. This software is certified with BTL Listing at 2013. This Software is the Lighting Control only with power USER INTERFACE function and much better graphic function than other Software.



Overview

The SmarTrol v.3.1 is developed to control and manage the power of building, facility, lighting and integrated system software efficiently. Therefore the SmarTrol v.3.1 is managed as individual system and if necessary, it is managed integrally with power and facility auto control to perform the interlocking control. The SmarTrol v.3.1 is installed at server and client to perform the BACK UP function for each other and it can monitor the modified program from server and also monitoring the contents of DB from client.

Application

It can be applied at various places like small and medium sized buildings and large buildings. It can be applied at shopping mall, office only building, airport, convention center, gym, gymnasium, APT and public area where the Lighting Control is needed. It is configured with Lighting Control Only Program. Also the schedule, sunset/sunrise, occupancy, group, pattern, DALI Dimming and Photo control is available.

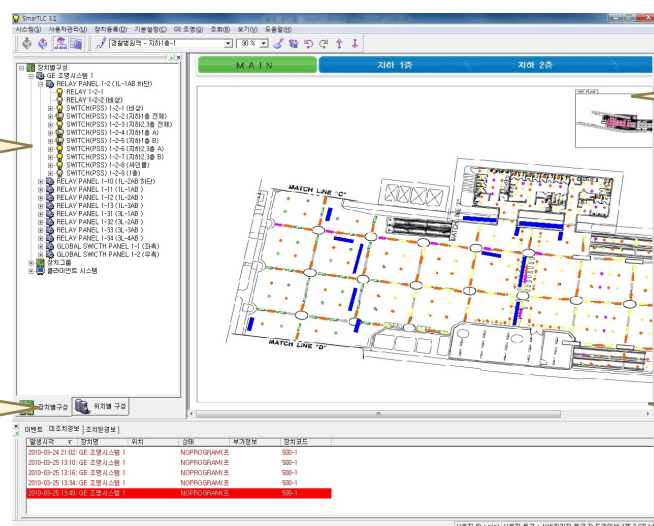
Main Feature

- Use the client mode and server mode with general PC class computer to apply the interlock BACK UP & STANDBY function.
- Limits the monitoring range & control range for management users.
- Monitoring the real time load capacity usage by Trend Graph.
- The Local Control Panel is continuously operating the control even in the event of modifying the program & transmitting the data.
- The each menu of the screen is placed as Icon to re-locate freely.
- For the operation of graphic blueprint from the screen, the graphic file is supporting with ... BMP, WMF, JPEG, AVI, PCX, DCX
- The TREE structure is ready for display the device-specific, location-specific, group-specific..
- Even though the graphic screen is enlarged, the screen will not cracking.
- When alarm goes off, it automatically finds the corresponding device and relay.

Screen of SmarTrol v.3.1

Real time programming and monitoring.

Graphic edit, On Line monitor, Diagnostic Pop up



Schedule, Pattern and Group Down Loading

Ethernet, Mod bus, BACNet interface

LIGHTING CONTROLS



SOFTWARE

SmarTLC

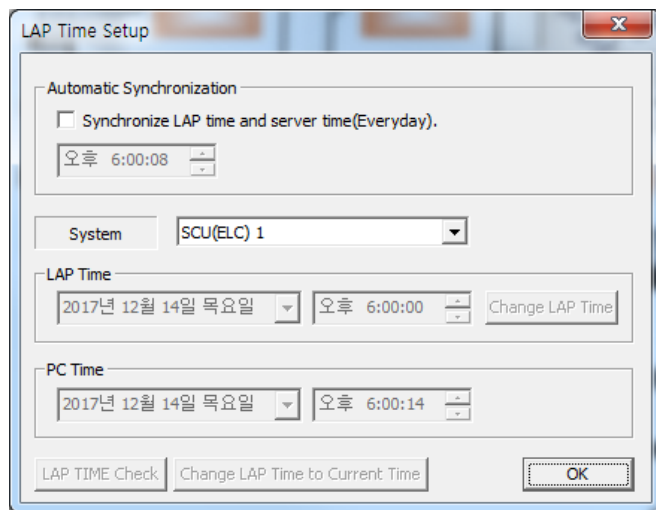
Software for SLC & ON/OFF Control

SmarTrol v.3.1

Software for ELC, DALI & Wireless System

Configure : Communication, User Level, Location and Device configuration

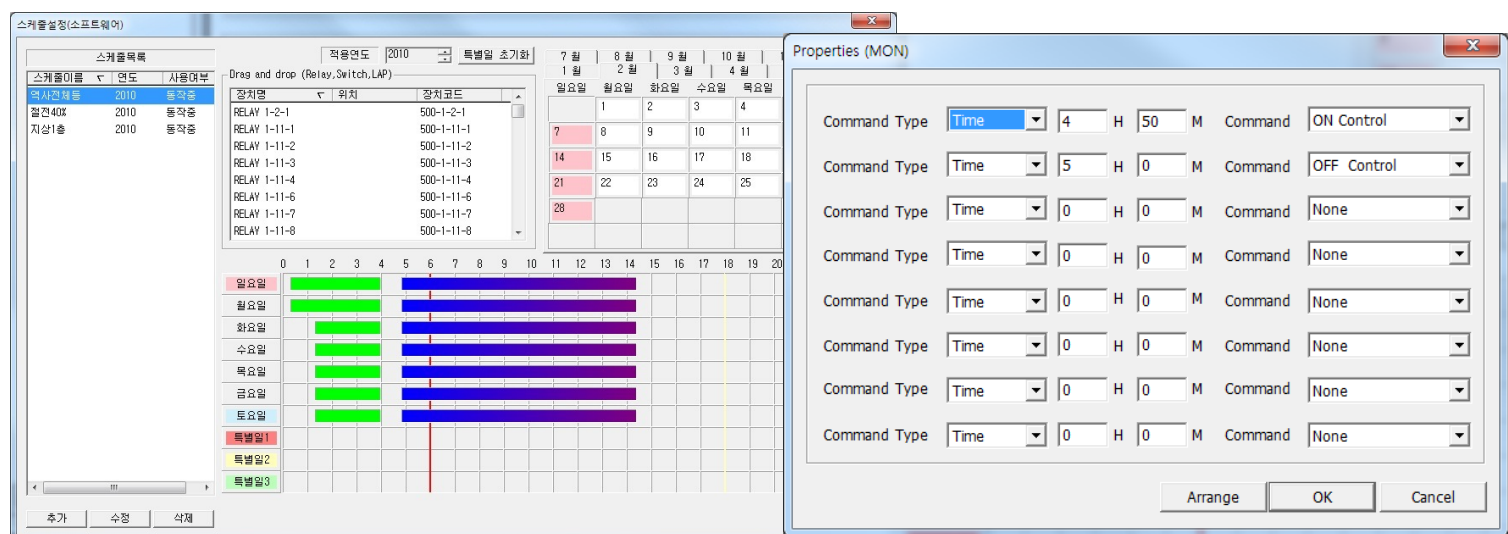
Operation



Install the Smatrol 3.1 Installation Program at PC that is managed by general Window OS. First, install the Smatrol 3.1, then log-in to set the communication. Set the communication between SCU & PC and then the computer will select the server mode or client mode. Input the data for each site's data-base and also input the program for each control scenario. After the data is inputted, start the downloading from Online status. After check the feedback status of each downloaded program, again re-download the exact program.

The Graphic Editing Function is simply done by DROP down at the graphic screen by dragging the corresponding Circuit (Relay) from the Data-Base. The contents of each program & event is remained at data login record. The user can analysis the real load status for each data by looking at the data record of real management operation and also looking at the processing of creating the program.

Program : Schedule, Pattern and Group, Down and Up Loading



Monitor : Graphic edit and On line monitor , Run time, Data Logging and Diagnostic pop up

